

## Showa Taxi will take you there.

☎ 0243-22-1155

\*For detailed information and prices, see the individual activity flyers.  
\*Content, prices, and hours are subject to change.  
\*For more information, contact the Nihonmatsu Tourism Association



1

### Nihonmatsu's oldest temple, established in 1460 [Eishozan Ryusenji Temple]

A Buddhist temple in the Soto school, Ryusenji not only provides training in Zen meditation, but also hosts a temple festival, evening cherry-blossom concert, and other community events.

1-81 Niitaki, Nihonmatsu, Fukushima Prefecture, 964-0003  
Approx. 10 min. by taxi from JR Nihonmatsu Station.  
Parking available. Temple buildings open to the public 10:00-18:00  
<http://eishozan-ryusenji.wixsite.com/ryusenji2>

☎ 0243-22-0423

3

### Tradition lives on this pottery studio [Nihonmatsu Banko Ware, Nihonmatsu Ware] Inoue Pottery Studio

The current head of the studio—an artist as well as an artisan—has continued the production of Banko ware, which dates to the Edo period, and revived Nihonmatsu ware.

1-456 Niitaki, Nihonmatsu, Fukushima Prefecture 964-0003  
Approx. 5 min. by taxi from JR Nihonmatsu Station. Parking available.  
Open 9:30-17:30, closed Wednesdays  
<http://www.inouegama.com>

☎ 0243-23-2195

5

### Specializing in zaku zaku vegetable soup [Kunitaya Miso and Shoyu Factory] Kura Café Sen no Hana

his small factory has been making shoyu and miso since the Edo period (1603-1868). Local Nihonmatsu cuisine is served in a remodeled kura, or brewery building, on the property.

2-30 Takeda, Nihonmatsu, Fukushima Prefecture 964-0902  
Approx. 15 min. by taxi from JR Nihonmatsu Station. Parking available.  
Open Afternoon: 11:30-14:00 / Evening: 15:00-17:00, closed Mondays  
<http://kunitaya.jp>

Kunitaya Miso and Shoyu Factory ☎ 0243-22-0108  
Kura Café Sen no Hana ☎ 0243-24-7018

7

### 160 years of woodcarving and lacquer craft [Hashimoto Buddhist Sculpture Shop]

The pair of brothers who run this shop are fifth generation carving and lacquer craftsmen. They use traditional techniques to repair shrine and temple sculptures, craft Buddhist family altars, and more.

1-166 Takeda, Nihonmatsu, Fukushima Prefecture 964-0902  
Approx. 10 min. by taxi from JR Nihonmatsu Station. Parking available.  
Open 9:00-18:00.

☎ 0243-22-0760

2

### Dake Onsen's famous beautifying hot springs [Yui no Sato Azumakan]

Established in 1934, Azumakan is Dake Onsen's most frequented inn. Enjoy hot springs, Japanese cuisine, and warm hospitality.

1-5 Dakeonsen, Nihonmatsu, Fukushima Prefecture 964-0074  
Approx. 20 min. by taxi from JR Nihonmatsu Station  
(pick-up and drop-off service available with advance reservation)  
<http://www.azumakan.com>

☎ 0243-24-2211

4

### Brewing Nihonmatsu's favorite drink [Himonoya Sake Brewery]

Established in 1874, this brewery specializes in Senkonari sake. The drink takes its name from the sennari hyotan (thousand gourds) battle standard of the great military leader Toyotomi Hideyoshi.

173 Matsuoka, Nihonmatsu, Fukushima Prefecture 964-0905  
Approx. 5 min. walk from JR Nihonmatsu Station. Parking available.  
Open 9:00-16:00, closed Sundays and holidays  
<http://senkonari.com>

☎ 0243-23-0164

6

### Brewing Nihonmatsu's favorite drink [Tanaka Furniture Workshop and Showroom]

Established in 1869, this furniture workshop and showroom has maintained Nihonmatsu's traditional techniques and quality while incorporating new designs.

1-48 Kakunai, Nihonmatsu, Fukushima Prefecture 964-0904  
Approx. 10 min. by taxi from JR Nihonmatsu Station. Parking available.  
Open 10:00-18:30, closed Wednesdays  
<http://tanakakagu.jp>

☎ 0243-23-0219

8

### Customers love the Tamayokan, a Nihonmatsu specialty [Hinatsu Japanese Sweet Shop]

Meticulously crafted sweets featuring local ingredients. Stop in to try the seasonal specialties!

1-203 Motomachi, Nihonmatsu, Fukushima Prefecture 964-0905  
Approx. 5 min. walk from JR Nihonmatsu Station. Parking available.  
Open 8:00-19:00, 365 days a year

<http://okasidokoro-hinatsu.com>  
☎ 0243-22-0063

Reservations  
and Information

Nihonmatsu Tourism Association ☎ 0243-24-5085 Open 9:00-17:00

**\*For detailed information and prices, see the individual activity flyers.**

Nihonmatsu Tourism Association

Fun City Nihonmatsu!

Good times and great food for the whole family!

# Nihonmatsu Activity MAP

Are you looking for  
lots of exciting activities?  
Do you want to experience  
the best Japan has to offer?

And do it all as a family?

You'll find what you're looking right here  
in Nihonmatsu,  
where there's always lots to do, see, and learn.



\*For detailed information and prices, see the individual activity flyers.



## Nihonmatsu Activity MAP

### 1 Zen meditation in an ancient temple. Eishozan Ryusenji Temple



Learn *zazen* in the 300-year-old hall of this Buddhist temple surrounded by nature. You can also ring the temple bell, do calligraphy, and get a temple stamp.

### 2 Immerse yourself in the spirit of Japan. Yui no Sato Azumakan



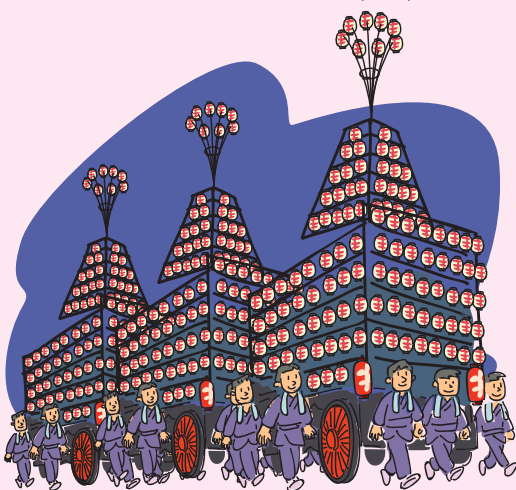
Beginning lessons in flower arranging, tea ceremony, and wearing a yukata are available at this hot spring inn. The proprietress will show you the basics of Japanese culture—and hospitality.

### 3 Tour a pottery studio and make a plate! Nihonmatsu Banko Ware, Nihonmatsu Ware Inoue Pottery Studio



The whole family can knead clay and make plates at this studio specializing in Nihonmatsu ware and Nihonmatsu Banko ware. See the workshop, visit the gallery, and even get a mini lesson in tea ceremony.

Lantern Festival (Oct)



Chrysanthemum Doll Festival (Oct–Nov)



### 4 Tours and tastings at an old-fashioned sake brewery. Himonoya Sake Brewery



Senkonari is a local artisanal sake rarely available outside Nihonmatsu. See how it's made and sample it at this brewery.

### 8 Make Japanese sweets with the whole family! Hinatsu Japanese Sweet Shop



*Wagashi* are the traditional sweets of Japan. Learn to make an authentic sculpted variety called *jonamagashi*, and sample Nihonmatsu's popular bean jelly balls, *tamayokan*.

### 5 Enjoy miso and shoyu at lunch, then see how they're made. Kunitaya Miso and Shoyu Factory Kura Café Sen no Hana



The café serves local cuisine featuring lots of vegetables plus house-made miso and shoyu. Try Nihonmatsu's famous *zaku zaku*, a chunky vegetables soup.

### 6 Learn traditional woodworking skills! Tanaka Furniture Workshop and Showroom



Nihonmatsu boasts a 360-year tradition of fine furniture making. At this shop, you can try planing wood and hammering in wooden nails alongside a master craftsman.

### 7 Make a beautiful pair of chopsticks. Hashimoto Buddhist Sculpture Shop



The craftsmen here carry on a 160-year tradition of woodcarving and lacquer work. They'll help you make your own unique pair of chopsticks using a technique called *togidashi*.

